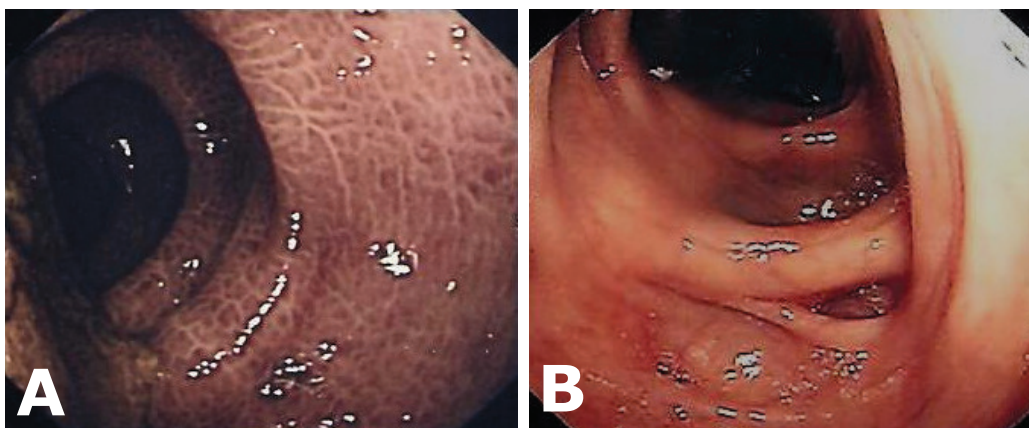


**Norwani BASIR and Vui Heng CHONG**



An elderly lady with end stage renal failure undergoing regular haemodialysis was evaluated for lower abdominal pain and constipation. She had been using a herbal medication to help her bowel movements for the past two years. The colonoscopic finding shown in **Panel A** was found throughout her colon (compared to a normal colonoscopy, **Panel B**).

**What is the endoscopic finding?**

**Answer:** refer to page 105

**Correspondence author:** Vui Heng CHONG,  
Department of Medicine,  
RIPAS Hospital, Bandar Seri Begawan BA 1710,  
Brunei Darussalam.  
Tel: +673 +8778218  
E mail: chongvuih@yahoo.co.uk